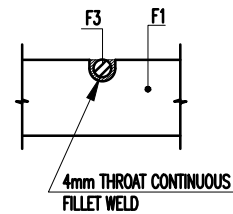
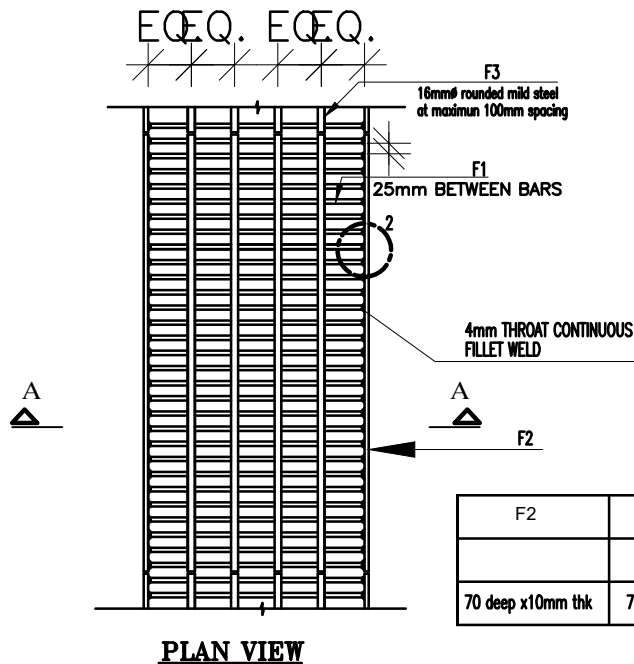
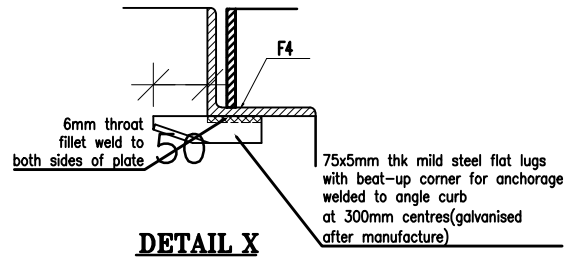
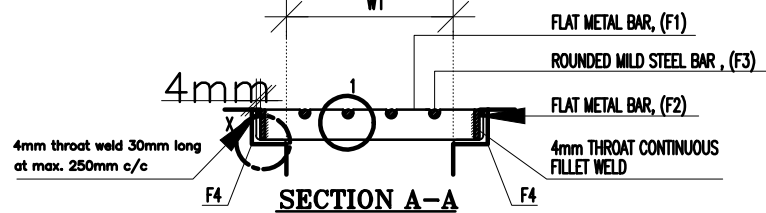
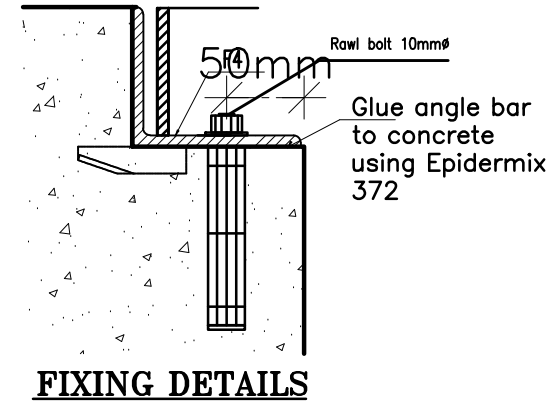


Internal width of drain



DETAIL 1



NOTES:-

1. Hot rolled sections according to BS EN 10210 Part 2.
2. Welds comply with BS EN 1011
3. All assembled metal to be hot-dipped galvanised as per BS EN 150 1461 after manufacture
4. All welding to be 4mm throat continuous fillet weld
5. Number of bars F3 as per Engineer's requirements.
6. Grating frame to be anchored by means of fishtail welded at start/end of drain.
7. If grating longitudinally located, then to be placed upside down.
8. Rawl bolts 10mmØ to be fixed each side 4nos. per 500 or 1000 module.

| F2 | F1 | F3 | F4 (Galvanised angle iron) | MODULE WIDTH (mm) |
|-------------------|----------------|--------------------------|-------------------------------|----------------------|
| 70 deep x10mm thk | 70 x10mm thick | 16mmØ rounded mild steel | 80x80x10 | 1000 |

METAL GRATING

DRAWN
CHECKED
SCALE
DATE